

## Installation Guide

### BAMBOOTOUCH® OUTDOOR SOLID DECKIUNG

(on hard or stabilized soil)

#### Simplified installation guide

##### 1. STRUCTURE :

A good structure is essential for a good installation.

Install the structure in accordance with current standards.

The floor must be able to support the load.

BambooTouch® recommends the use of solid joists, but composite joists can be an alternative.

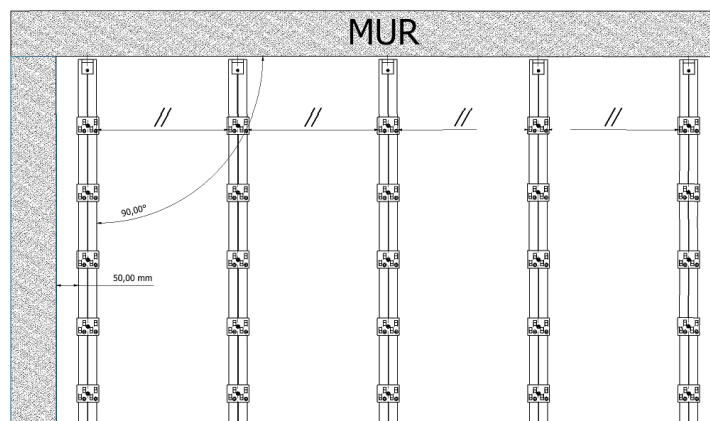
To avoid contact between the joists and water, a waterproof membrane should be installed.

Another possibility is to use waterproof strips only under the joists.

**Position the joists perpendicular to the direction in which the deck is laid, spacing them 40 cm apart for private use and 35 cm apart for commercial use.**

Normally, your deck is built with a slope of 1 to 2% to facilitate water drainage.

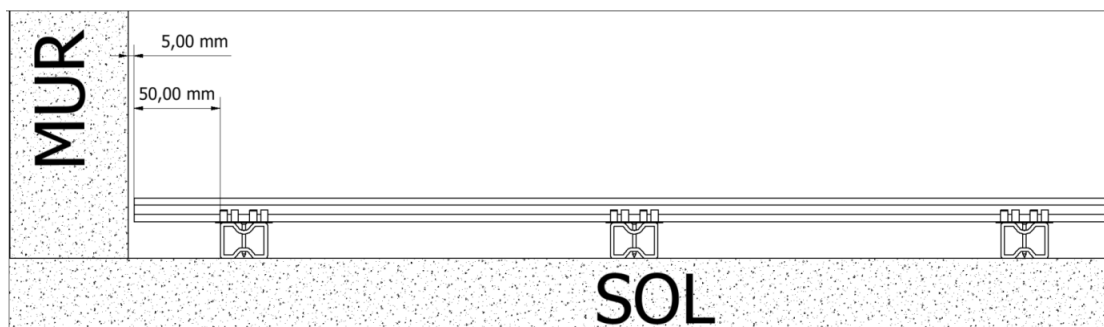
*Laying pattern of the joists*



##### 2. SUPPORT AT THE END OF THE TERRACE:

**The planks may never be overhanging and not supported by a joist.**

However, a maximum overhang of 50 mm is acceptable on the edge of the terrace.



*Diagram of the joists, the plank and the maximum overhang at the edge of the terrace*

### 3. MOUNTING ON A STUD

The installation of the floor on the blocks is carried out in the same way. The joists will simply rest on the blocks.

We refer you to the manufacturer/supplier of the joists and posts to define the spaces between the joists and the number of posts per m<sup>2</sup>.

When using solid bamboo joists (40 x 40 mm), the space between the posts can be up to 60 cm maximum, depending on the use and the weight to be supported.

If composite joists (30 x 40 mm) are used, the space between the posts should be limited to 40 cm for residential use and 35 cm for commercial use.

### 4. LAYING THE PLATES:

#### 4.1 – Installation of the first plank

Be sure to mix the planks you receive. The color differences are small and will fade over time, but a heterogeneous installation is nevertheless recommended.

The decking planks have 2 different surface finishes, choose the finish that will be used. Be careful not to mix the two decors unless it is for aesthetic reasons.

Use the appropriate Bambootouch® clips and screws for your product.

**Only the use of our clips guarantees installation.**

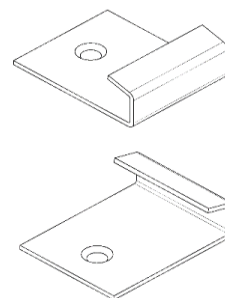
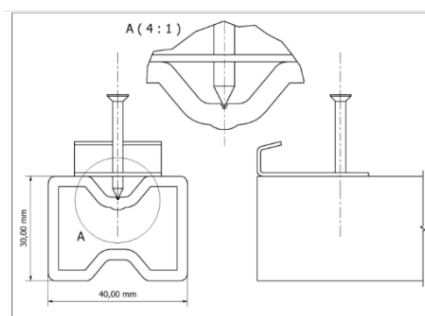
Start by screwing the starter clips onto the joists. Take care to pre-drill with a 3.5 mm drill bit.

**Do not fasten your clips to the joists yet. Use a low torque and a slow speed.**

**Make sure that there is a gap of 5 mm between the wall and the first board.**

Make sure you install and fix your clips precisely so that your plank is parallel to your wall once it is in place.

If the wall is not straight, a compromise gap must be found. For example, cutting and fitting a finishing plank if the wall is rounded.

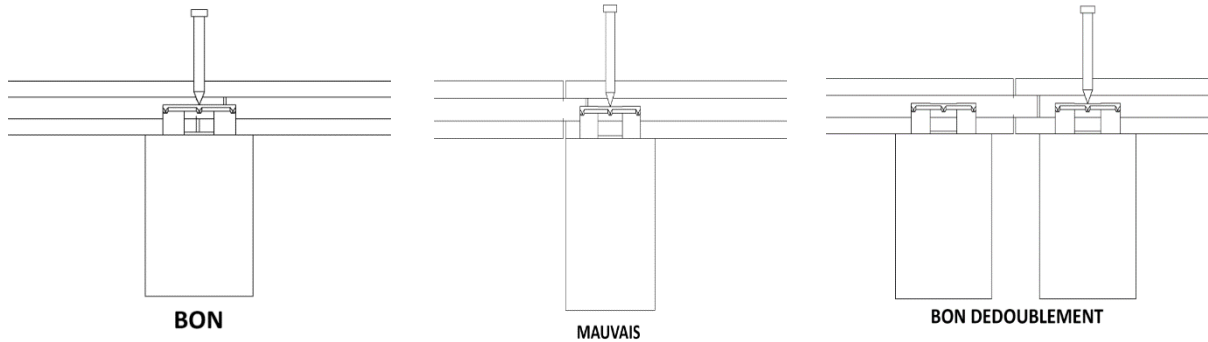


*Scheme for fixing the starter clips in the joist*

*Start clips*

The ends of the planks must rest perfectly on the joists.

If this is not possible, the joist should be doubled.



**BON**

**MAUVAIS**

**BON DEDOUBLEMENT**

**Ok**

**Not ok**

**correct duplication**

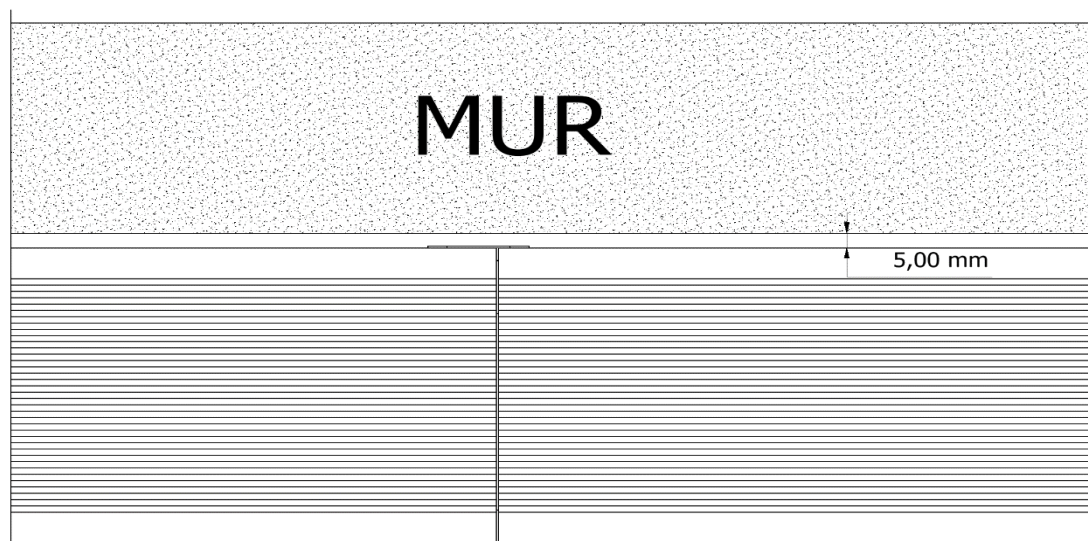
Once the starter clips have been fixed into the joists, lay your first plank and check one last time that it is parallel and spaced out from the wall.

Remove the plank and tighten the clips. Replace your first plank.

#### 4.2 - Distance between the blades

The planks are tongue and groove. This means that there is no gap between the planks in the longitudinal direction. Between the individual planks, **the clip defines the constant distance**.

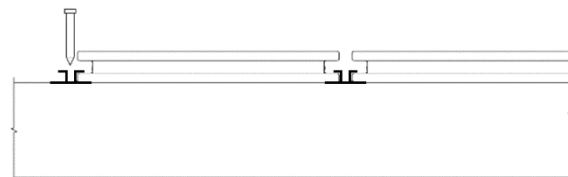
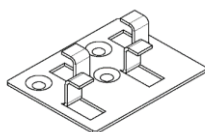
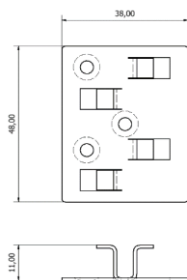
Use one clip on each joist.



*Scheme of the distance between the wall and the first plank + lateral interlocking of the planks*

*Scheme of the fixing clips for solid planks*

*Scheme of the fixing clips and solid planks*



#### 4.3 - Installation of the following planks

Before installing the second plank, fit and secure the fixing clips (those that separate the first and second planks). Make sure that the clips are correctly inserted into the bevel of the plank. Use a rubber mallet and a small wedge if necessary.

Always pre-drill the joists with a 3.5 mm drill bit.

Use one clip per joist. Use the screws provided.

Place your second plank in the clips.

Tap your plank laterally with a rubber mallet and a tapping block to avoid banging.

The plank should fit perfectly into the bottom of the clip grooves.

Make sure that your blade is parallel.

You can also use a suitable flooring strap to tighten your boards.

Install and secure the following clips. Install all planks in the same way.

#### Joining the joists:

If your deck exceeds the length of one joist, install an additional joist in line with the first.

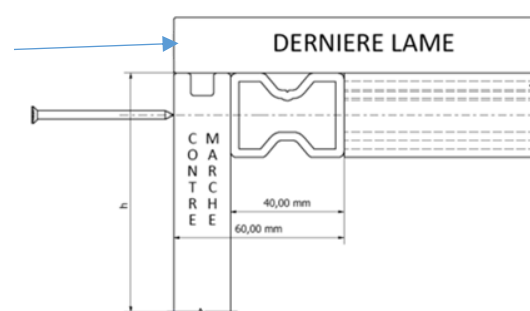
Secure the 2 joists together with a joining piece.

#### 4.4 - Finishing

There are several ways to achieve a neat finish at the end of the terrace. The diagram below shows one of the possible solutions. A plank cut to the right height forms a riser and is fixed laterally to a perpendicular joist.

For reasons of strength and durability, it is advisable to cut the bevel of the last plank

*Scheme of one of the possibilities of finishing the edge of the terrace with a cut bevel*



## 5. CALCULATION OF THE QUANTITIES NEEDED:

**These data are provided for information purposes only and do not constitute a commitment on the part of BambooTouch®. Please consult your dealer for advice.**

- ✓ Number of planks required:  
Multiply the surface area of the deck in m<sup>2</sup> by 6.85 and divide by the length of the plank in metres.

Example :

For a 60 m<sup>2</sup> Bambootouch terrace with a length of 2.20 m, the number of planks would be :  $(6.85 \times 60) / 2.2 = 187$  planks

- ✓ Number of joists required:  
Multiply 3.5 x (deck area in m<sup>2</sup>) / length of joist

Example :

For a 60 m<sup>2</sup> terrace, the number of massive joists will be :  $(3.5 \times 60) / 2.5 = 84$  pieces.

Number of clips per plank

Start: 1/ joist

Fixing clip : 20 pieces/m<sup>2</sup>

Fixing screws: supplied with the clips.

=====

### MATERIALS :

- Plastic wedges
- Waterproofing membrane
- Solid joists
- Bambootouch® Outdoor solid planks

### TOOLS:

- Screwdriver
- 3.5 mm diameter wood drill bit
- Mallet
- Striking block
- Water level
- Flooring strap

### LEXICON :

**Clips**: metal part which allows the fixing of the deck planks on the joists

**Joist** : Structural part and sub-basement that supports the decking planks. The planks are fixed to the joists.

**Paneling**: Action of placing the joists on the support

**Decking planks** : solid BambooTouch® plank that constitutes your terrace.